

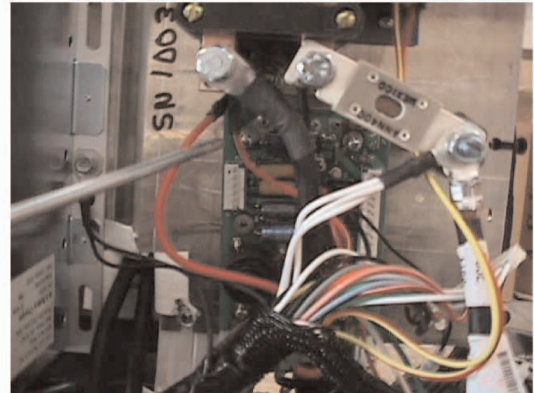


## 72V Circuit Board Replacement Instructions

**TURN OFF MASTER DISCONNECT SWITCH UNDER SEAT, and REMOVE YOUR UPPER AND LOWER DASH.**

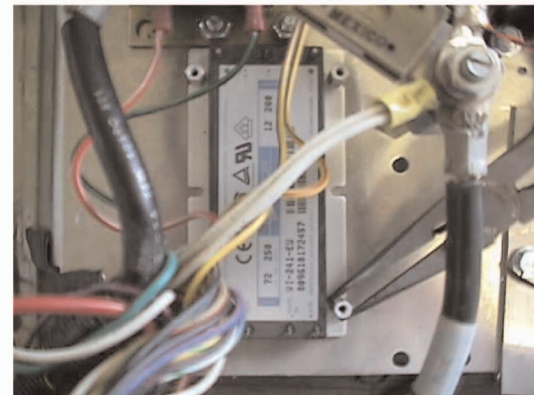
### Step 1

Remove wires from circuit board, and four Phillips screws. Keep screws you will use them later.



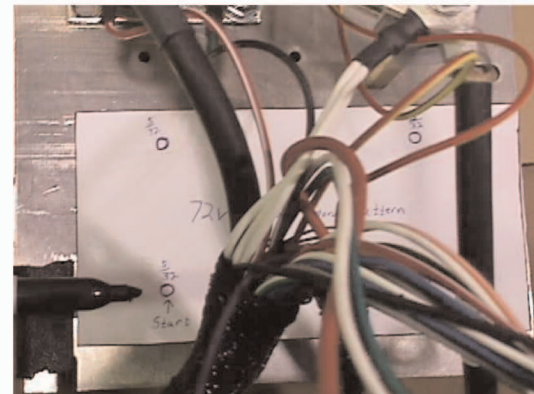
### Step 2

Once you pull the circuit board off, you will see a DC/DC converter. Take a pliers and twist off the four posts so you can remove the DC/DC converter.



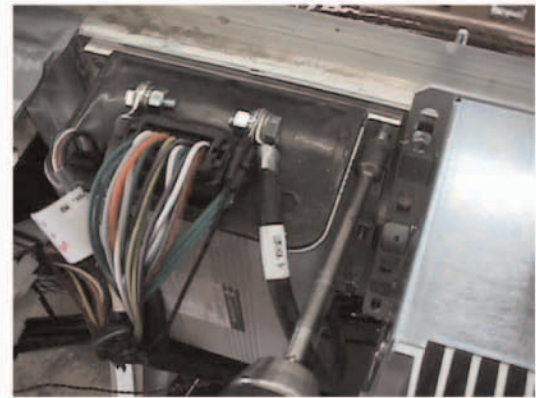
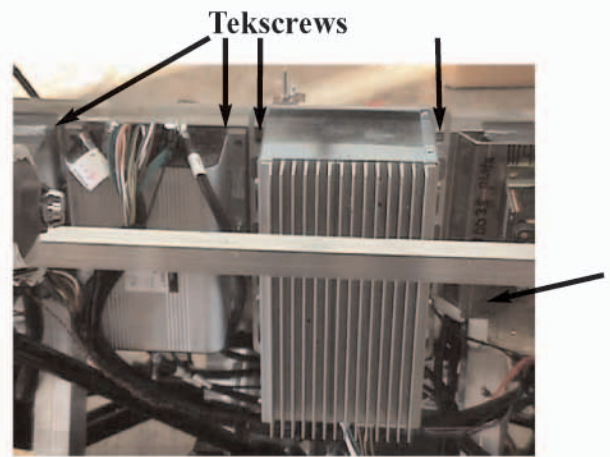
### Step 3

Now take the 72V circuit board pattern and punch out the four holes on it. On the pattern, there is a spot marked start. You will match that hole up with the bottom left hole on the ECM that was used for the old circuit board. Mark the remaining holes and drill them with a 5/32 drill bit.



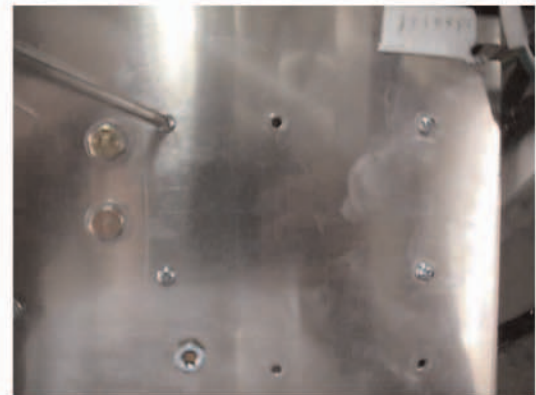
#### Step 4

After you have your holes drilled, remove five Tek screws with 3/8" socket of Tek driver. The ECM will fall forward, in some cases you may have to cut the two black tie straps that hold the fuse box cables to the ECM.



#### Step 5

Once you have the ECM forward, place the DC/DC circuit board combo so it lines up with the holes you drilled, and use the four screws you saved from the old board.



#### Step 6

Hook-up the four sets of wires that were unplugged. You will be able to see where three of the four go. The big red signal wire goes to J1 on the top right of the board.



#### Extra Information:

If you need your 12V accessory wires, you will notice there are not any on the new board. There are two locations you will find them. J8 is the negative connection and J9 is the positive connection.